



Humanities

Guide to Secondary 2 Streaming



Humanities Weighting

Paper 1 - 50% (Social Studies)

Paper 2 - 50% (Geography/History)



Social Studies Content Coverage

Issue 1: Exploring Citizenship and Governance

Issue 2: Living in a Diverse Society

Issue 3: Being Part of a Globalized World



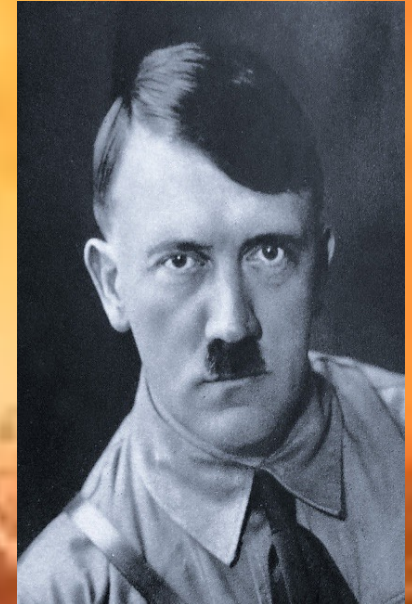
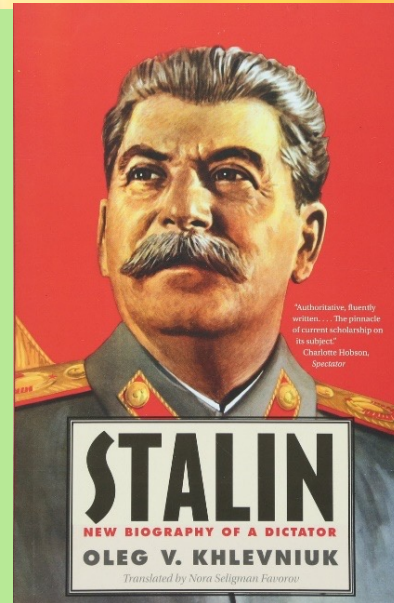
Social Studies Mode of Exam

**Source Based Cased Study
(5 sub questions): 35 marks**

**Structured Response
Questions
(2 sub questions): 15 marks**

History Content Coverage

20th Century World History
Impact of World War 1
Establishing Peace
Rise of Authoritarian Regimes
War In Europe
War in Asia Pacific



History

Content Coverage

20th Century World History

The Outbreak and
Escalation of the
Cold War
End of the Cold War






History

Mode of Exam

**Source Based Cased
Study
(5 sub questions): 30
marks**

**Structured Essay
Questions
(2 sub questions): 20
marks**

The background features abstract, overlapping green geometric shapes. On the left, a solid green triangle points downwards. On the right, a complex arrangement of semi-transparent green polygons in various shades of green and yellow-green creates a layered, dynamic effect. The text is centered on a white background between these two graphic elements.

Geography Elective

Streaming Briefing

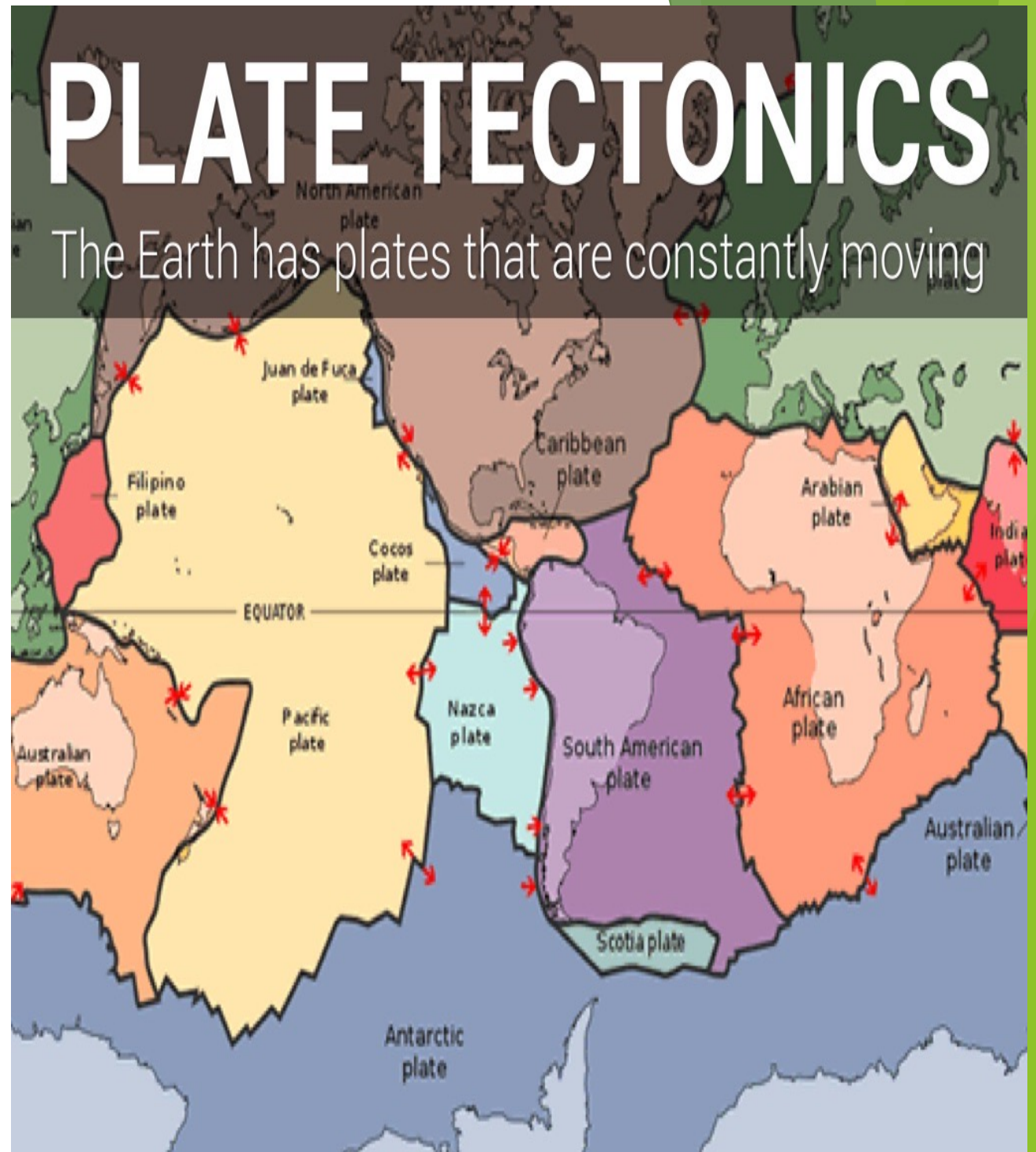
Physical Geography

Topic 1:



Physical Geography

Topic 2: Plate Tectonics



Human Geography

Topic 1: Tourism



Human Geography

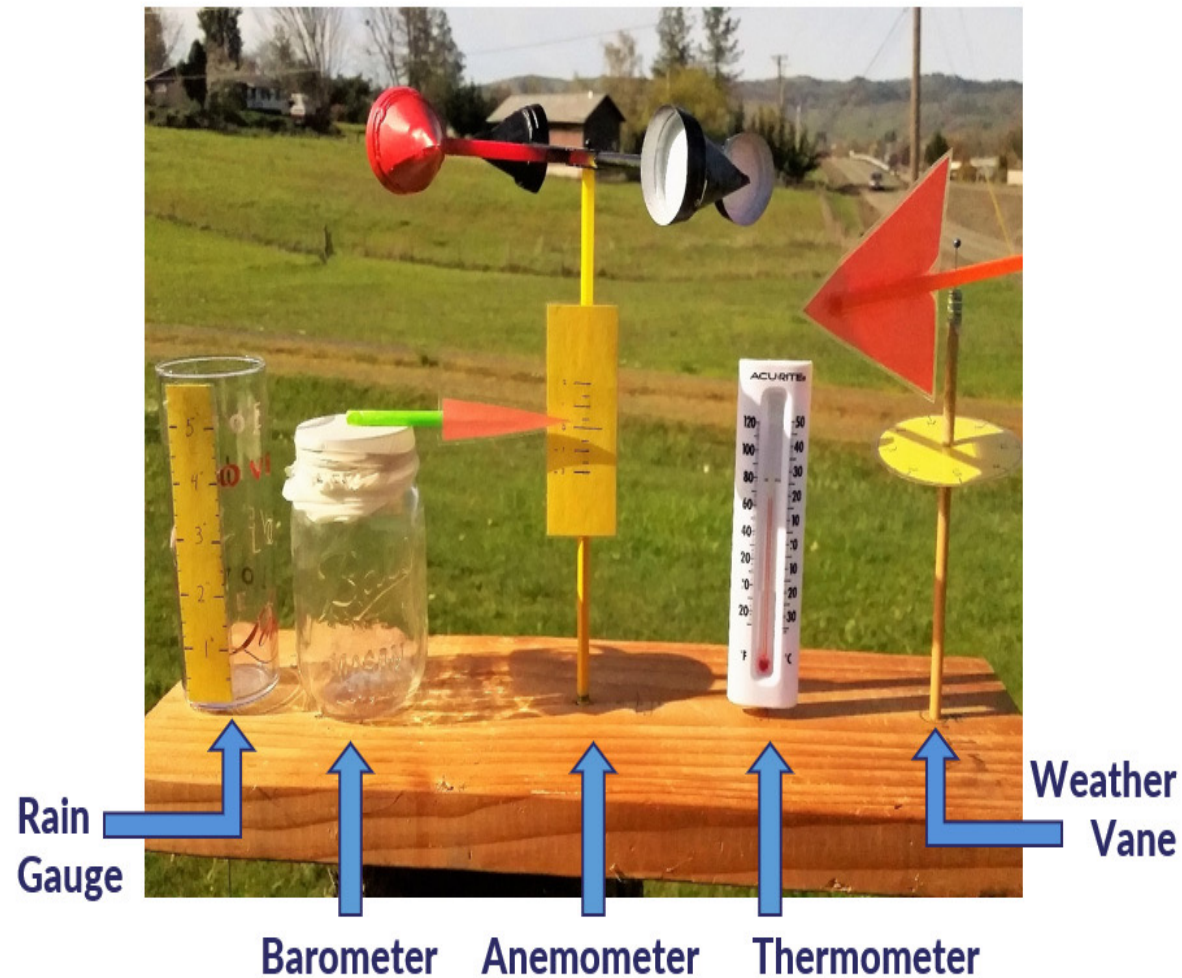
Topic 2:

Geography of Food



Fieldwork

Weather and Climate



Fieldwork: Tourism



Exam Format

► Fieldwork

- Understanding the components of the fieldwork process
 - Pre-Fieldwork
 - Fieldwork
 - Post Fieldwork

► Structured Questions

- Data interpretation
- Content Questions

► Essay Questions

- Require an assessment of factors / strategies